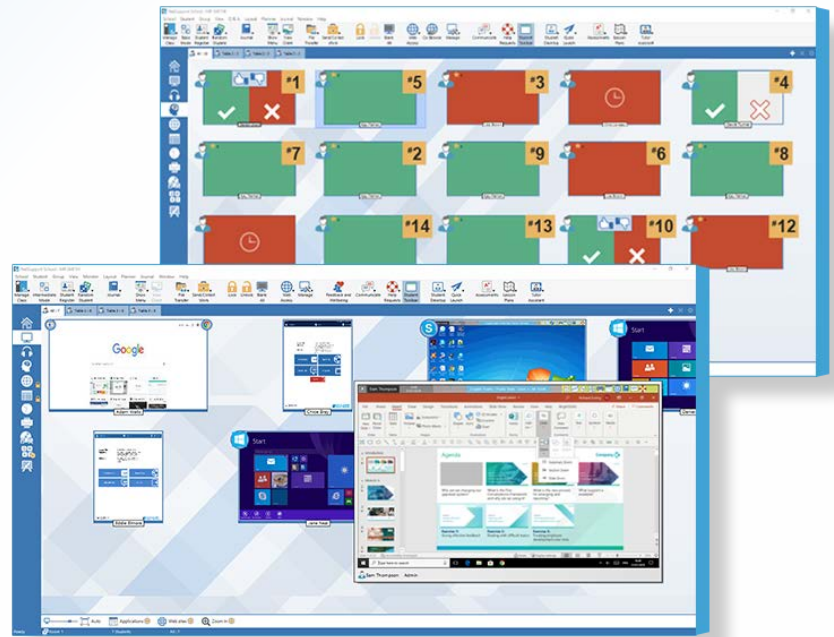


Classroom Management for education and training



Best practice teaching tools for your classroom

NetSupport School is the market-leading classroom software solution that supports teachers with a wealth of dedicated assessment, monitoring, collaboration and control features to ensure they can get the very best from their technology.

Rising to the challenge and requirements of the modern classroom for over 34 years, NetSupport School helps teachers to organise and deliver lesson content, work collaboratively and monitor students' PCs – ensuring that complete attention and focus is maintained at all times. There are no hidden extras: all features are included as standard, including dedicated Teacher, Tutor Assistant and Technicians' modules.



Key features:

- Real-time instruction tools.
- Show teacher screen to students.
- Interactive student thumbnails.
- View/Control students' screens.
- Testing and quiz components.
- Audio monitoring/language lab tools.
- Internet metering and control.
- Application metering and control.
- Digital student revision aids.
- Printer management.
- Hand out and collect work.
- Dedicated Technicians' Console.
- Multi-platform support.

Manage

Classroom management

- Power on or off all classroom computers from the teacher's PC.
- Send a remote "log off" or "log in" to all PCs.
- Blank students' screens to gain attention.
- Lock the students' mice and keyboards when instructing.
- Use layouts, so the teacher's PC represents the layout of the physical classroom.
- Use individual teacher profiles to deliver the features needed by each teacher.
- Give individual students visual rewards to encourage effort or behaviour.
- One click "request assistance" option for teachers needing tech support.
- Reset students' system passwords without IT support.
- Flexible range of connection methods to student devices, including SIS integration (ClassLink OneRoster and Google Classroom).
- Teachers can choose from three user modes (Easy, Intermediate and Advanced) to make features accessible to suit their level of edtech confidence.

Printer and device management

- Prevent students from printing in the classroom.
- Limit printer use by number of pages.
- Require teacher's authorisation prior to printing.
- Display a real-time print indicator identifying which student is currently printing.
- Show the number of paused print jobs requiring the teacher's attention.
- Prevent data being copied to or from USB storage and CDR/DVD devices.

Student register

- Request standard and custom information from each student at the start of class.
- Print the student register, including a total of any rewards or print jobs completed during the lesson.
- Use customised icons for students.

Student information bar

NetSupport School features a student information bar, neatly located at the top of each student's screen. This can be set to be always visible, hidden or to auto-hide.

The information bar provides feedback to the student on the current lesson, time remaining, current websites and applications that are available, keyboard monitoring, the lesson objectives in place and quick access to request help. It is fully configurable by the teacher, so the students can see the information they need at any time.

Hand out and collect files

- Distribute files and folders from the tutor PC to multiple student workstations.
- Transfer files to and from a selected PC in a single action.
- Distribute files to multiple PCs in a single action.
- Hand out and collect files with each student's details appended.

Student feedback

Teachers can choose between several visual options to gauge feedback from the students, helping to capture how they feel, their confidence in a topic and whether they need extra support.

Instruct and demonstrate

Real-time instruction (Show mode)

- Show the tutor's or a student's screen to selected students.
- Show just a selected application to selected students.
- Video Editor allows replay files (previous screen recordings) to be edited and exported to common video formats.
- Broadcast a video file to selected students.
- Deliver your presentations optimised for wireless networks.
- Leave a recording of your Show on the student's PC for future review.
- Interact audibly with students while demonstrating a topic.
- Show a student screen (Exhibit mode).

Screen highlighter and drawing tools

NetSupport School provides as standard a wealth of screen annotation tools to aid in presenting. These include line tools, arrows, shapes, text highlighters and more.

Virtual whiteboard

Full page whiteboard integrated directly within the Tutor supported by a wealth of drawing tools for improved collaboration within the classroom.

Internet co-browse

Allows a teacher to open selected websites and synchronise these with the browser on each student's PC. As a teacher navigates across a website, the students' PCs will follow.

Group leaders

A nominated student can be assigned certain tutor rights and act as a group leader until such privileges are revoked. Now includes a visual layout of leaders and their assigned group members.

Monitor and Control

View students' screens in real time (Monitor mode)

- Monitor the entire class in a single view.
- Scan through sets of student PCs in pre-defined multiples.
- Overlay additional information, including active application or active website.
- Zoom for optimised high-definition student thumbnails.

Tutor and Tutor Assistant apps

In addition to the desktop tutor application for Windows, the free Windows 10 Tutor app can be installed on Windows tablets and touch-enabled devices. It offers a launchpad for classroom and Office 365 apps, integration with OneDrive for sharing classroom resources, and more. Meanwhile, the free Tutor Assistant app (Apple iOS and Android devices only) enables teachers to control and monitor all students' workstations while moving around the classroom (V11 desktop Tutor component required).

Real-time keyboard monitoring

Designed to be used in conjunction with application control, this component provides teachers with a real-time insight into students' activity and topic understanding. It also provides "target" keywords for tracking understanding and a full history of keyboard usage by student and application.

Internet metering and control

- Monitor all students' internet use.
- View background websites open on all PCs.
- Open and close websites on all selected PCs in a single action.
- Record a full history of internet use for the class.
- Prevent or allow access to specific websites only.

Real-time audio monitoring and language lab tools

- Listen and monitor students' audio.
- Two-way audio chat.
- Record audio to file.

Test and assess

Student surveys

Find out if your students have understood the content covered during the lesson by conducting an instant survey.

- Create a survey using pre-supplied or custom responses.
- See instantly all responses and a summary for the class.

- Create groups dynamically based on student responses.
- Publish survey results to all students.

Student testing and quiz

Design an unlimited number of tests and examinations with minimum effort, including text, picture, audio and video questions.

- Create a library of resources and questions that can be shared.
- Utilise up to 8 different question styles.
- Create questions with between 2 and 4 possible answers.
- Set examination grading levels (e.g. over 75% = A grade).
- Track students' progress and see question answers in real time.
- Auto-mark the test so results are available instantly.
- Display individual results back to each student.
- Deliver results (including highlighting the correct answers) to the class.

Question and Answer (Q&A) Module

The Q&A Module enables teachers to reinforce key learning points and instantly gauge students' understanding during a lesson. It allows a teacher to verbally ask questions to the class as well as award points to individuals and/or teams. Options include:



First to answer

The teacher can choose the 'top x' fastest responders and the quickest student is asked for their answer. The teacher confirms if it is right or wrong and bounces the question to subsequent students.



Enter an answer

The teacher enters the answer to a question in advance and students are prompted for their answers. Results are instantly displayed to the class.



Pot luck and team modes

Students can be selected at random to answer, or team play can be introduced.



Peer assessment

Students give feedback to their classmate's response, i.e. they indicate if the answer given was correct or incorrect. The teacher's screen displays the result.

Tech Console

NetSupport School also provides a unique “Tech Console” specifically for technicians and network managers to ensure all computers in the school can be managed and maintained so they are always available for teaching.

Using the Tech Console, you can:

- Monitor all computers across the school network in a single view.
- Monitor all application and internet use on each student's PC.
- Transfer files and folders to selected or all computers.
- Generate a full hardware and software inventory summary for a selected PC, including hotfixes.
- Provide direct technical assistance to any classroom teacher.
- Display all students and teachers by active class.
- Conduct a chat with one or multiple students or teachers.
- Broadcast messages to groups or all network users in seconds.
- Shows real-time USB memory stick status on all students' PCs.
- Perform powerful 1:1 remote control on any selected PC.
- View and control services, processes and applications running on each PC.
- Power on/off, reboot and login to class computers remotely.
- View/Set power management, Windows update and security settings.
- Launch a local command prompt from the remote system on your PC.
- Apply a school-wide set of internet and application restrictions that are “always on”.



Learning

Student Journal

During a typical class, all appropriate items relating to the subject can be captured and automatically included in a PDF file for post-lesson review by each student. These include:

- Lesson details and objectives.
- Teacher and individual students' notes.
- Screenshots from within a presentation (and supporting explanation).
- Virtual whiteboard screens.
- Individual students' test results.
- URLs of websites used during the lesson.
- Copies of any class chat transcripts.
- Add chapters and bookmarks.
- Synchronise missing content for absent students.

Security

NetSupport School contains a wealth of security features to ensure its correct and authorised use. These include:

- Unique security key to make your copy incompatible with other copies.
- Restricted connectivity to only systems carrying a matching software licence.
- Tutor profiles, each allowing customised levels of functionality as required.
- Use AD profiles to limit which users are able to use the tutor or tech tools.
- Use AD profiles to force configurations for both tutor and student.
- Control the access and use of portable media devices within the classroom.
- Automatically re-apply restrictions on reboot of a student computer.
- NetSupport School is provided with example Active Directory (AD) templates for easy implementation.

System requirements:

Vista, 2008, Windows 7, Windows 8/8.1, Windows 10, Windows 11. NetSupport School operates in Terminal Server, Thin/Zero Client, Virtual Desktop and shared-resource computing environments and is supported on Google Chrome OS systems, iOS and Android tablets. Mac support also available with NetSupport School for macOS.

