

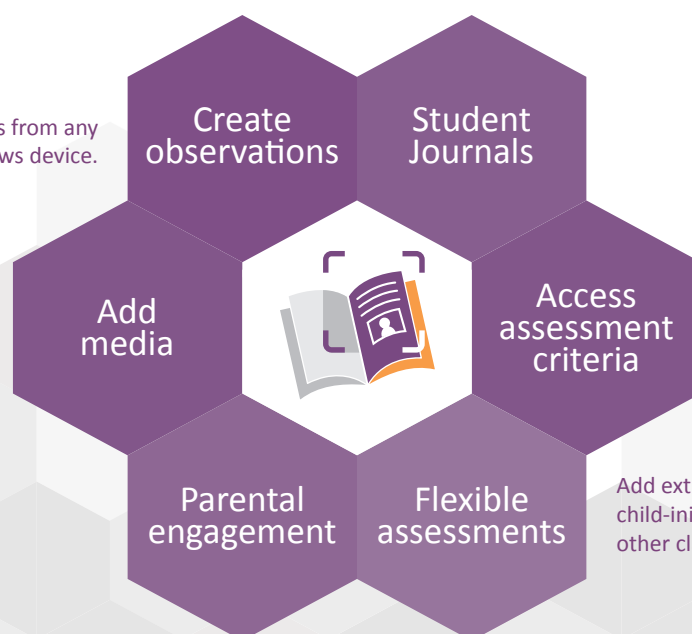


**ReallySchool** offers a fresh and intuitive approach to capturing student learning experiences during EYFS, KS1, Foundation Phase and KS2 primary education.

Our simple-to-use tablet app is designed for Teachers and TAs to ensure the easiest and most flexible approach to capturing observations in the classroom. Capture and record assessments from the in-built list of assessment points, identify child-initiated activities, capture photos, videos and audio to support evidence - and so much more.

All classroom assessments can be moderated post-lesson from the ReallySchool Windows console; additional notes can be added; and then, where appropriate, shared instantly with parents or carers. ReallySchool also generates beautiful journals and reports to ensure everyone can see who is on track, emerging or secure on any topic, and much, much more.

You can create observations from any iOS, Android or Windows device.



Add extra assessment criteria, record if child-initiated and include students from other classes for group work.

# Getting started...

Sign up and register your school with ReallySchool.

## Create classes and houses

Choose **create class** or **create house** from the side menu – or use the **+ class** or **+ house** buttons that can be found under the relevant tabs. Here, you will have the option to give your class a name, a brief description and select the relevant year group.

## Add or Import staff/students

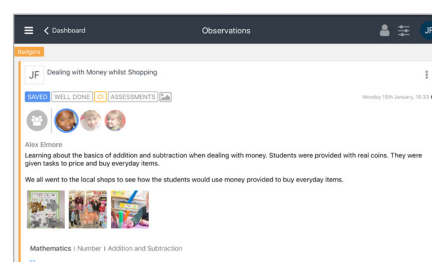
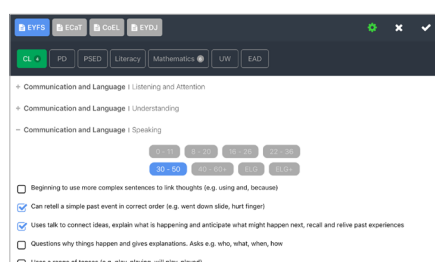
Under the relevant tabs, you can use **+ student** or **+ staff** to add new staff and students to your school. These options can also be found in the side menu under **new student** or **add teacher**.

Alternatively, for quick and easy setup, you can import students and staff from your school's MIS system via a CSV file.

# Key features when creating observations...

You can create observations from an iPad or Android tablet, or with a Windows/Mac computer.

Use the '+' icon under the observations tab to create a new observation – or choose **new observation** from the side menu.



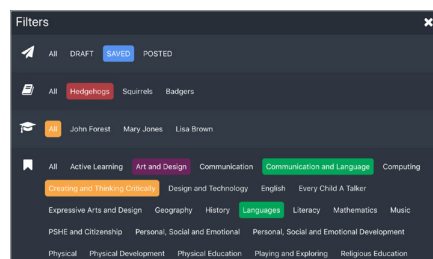
## Access current assessment criteria

EYFS, KS1, Foundation Phase and KS2 are all available straight from the system, as well as PScals, Pre-key stage, CoEL, Ecat and EYDJ frameworks.



## Add or capture photos

Support your observations by adding existing photos or capturing new ones straight from your device.



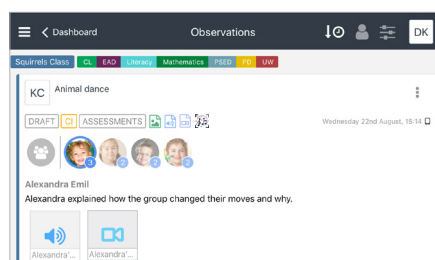
## Flexible assessments

Add extra assessment criteria, record whether it was child-initiated and include students from other classes for group work.



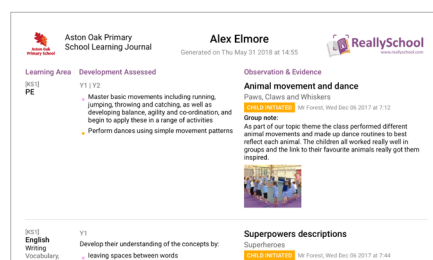
## Class reports

See the number of observations captured per assessment point for each child in a clear overview.



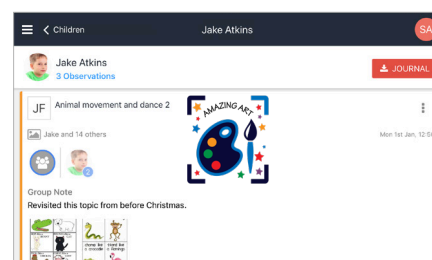
## Timeline filters

See pupils' progress on an informative timeline to gauge their achievements. Apply filters to focus in on the information.



## Detailed student view

See a summary for each student that includes the observations and assessments already captured and applied.



## Add audio and video

Add audio notes and videos to observations to capture learning as it happens. These can be played back by staff or shared with parents.

## Create student journals

Create easy-to-share journals and reports directly from any observation.

## Share achievements and progress

Share achievements with parents - all with a single click. They can then print or share it straight from the app. Add student badges to celebrate student success.

Try ReallySchool today! To get started, just register your school for free at [www.reallyschool.com](http://www.reallyschool.com)