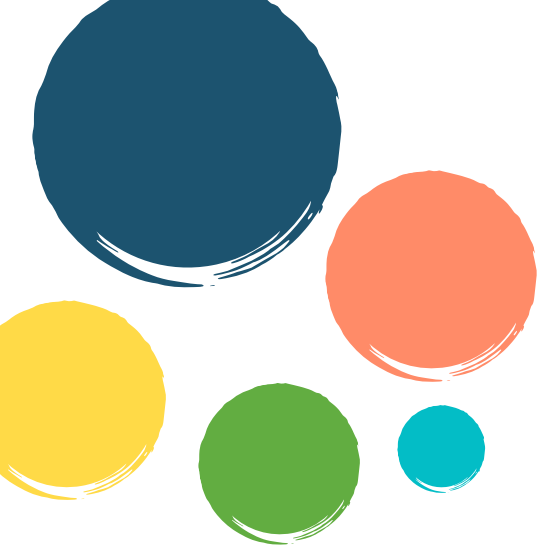




# An Introduction

*April 2021*





Who is GoLearn?

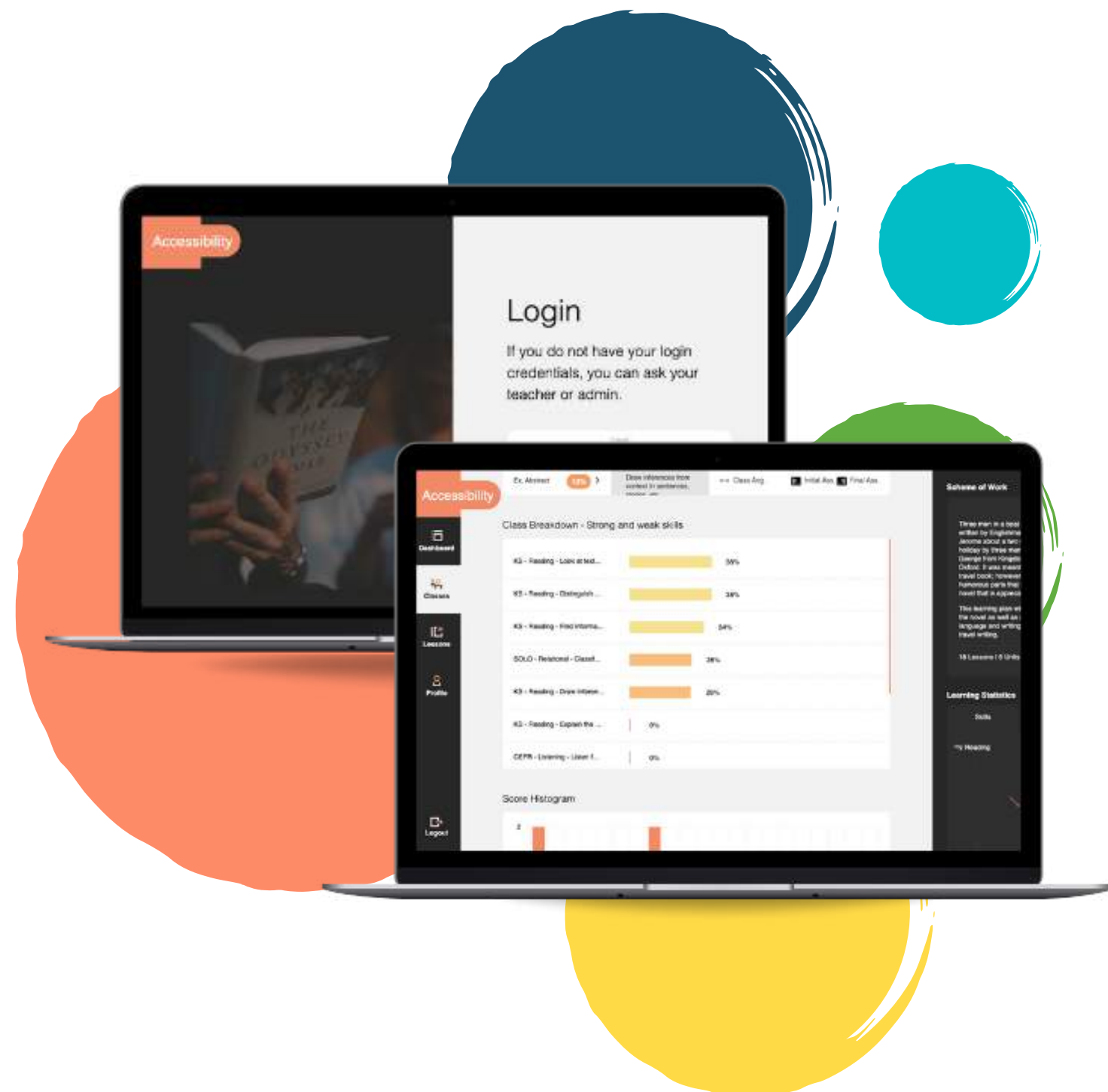




GoLearn has developed an AI-based English Language & Literacy teaching and learning solution with embedded Continuous Assessment technology.

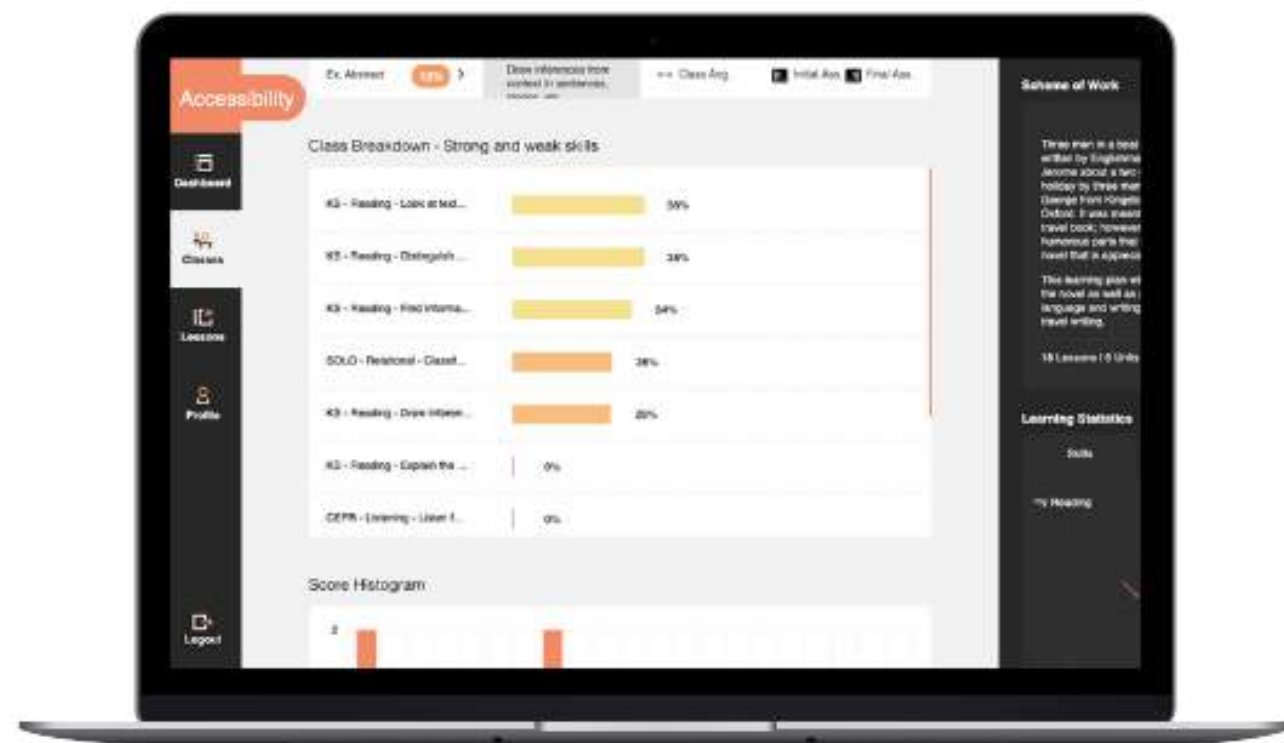
Founded in the UK, we partner with educators worldwide to achieve greater outcomes for their students.

Our mission is to improve student outcomes child-by-child in every classroom until all children are equipped with the literacy skills necessary to read, write and communicate their way to better wellbeing.



# Our platform

Our platform gives teachers ready-made lesson content for students to work through in class (or at home) and enables teachers to easily track and monitor student performance in real-time.



- Aligned with regulatory bodies
- Skills-based teaching and learning
- Evidenced pedagogical model
- Mapped to National and international curriculum
- Unique continuous assessment technology
- Reduce workload, Improve attainment
- Effective use of newly qualified teachers
- Working with schools in 13 countries
- Low cost, High impact

# Why Literacy?

Improving a child's deeper literacy skills in the subjects they study means they can use those skills, when called for, in any environment. It opens up a world of opportunities.

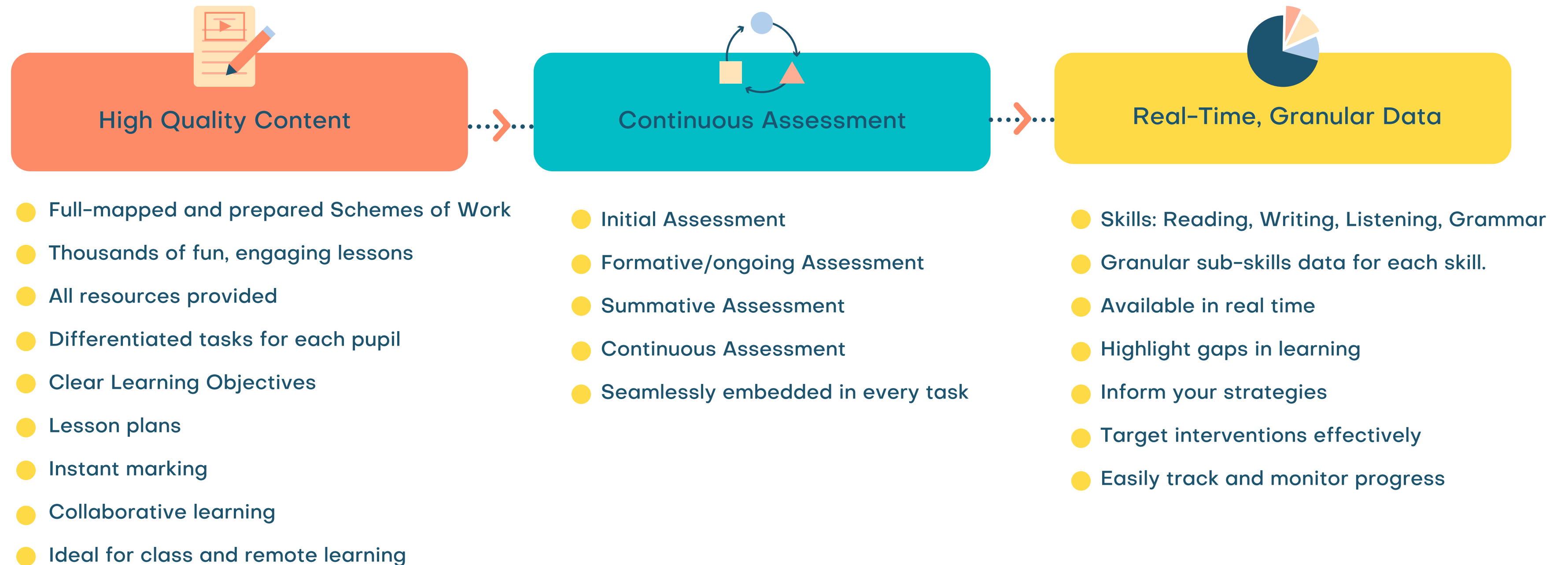
Our platform provides the support needed for teachers to ensure that students are able to apply the necessary skills when they encounter real-life challenges and improve their opportunities for success in the modern world.



Watch our video [here](#)

# A Resource You Can Teach From

Our unique features, underpinned by our evidenced pedagogical model, give you all the support you need to target learning gaps and easily improve student outcomes.



# Benefits of Using GoLearn

Our mission is to improve student outcomes child-by-child in every classroom until all children are equipped with the literacy skills necessary to read, write and communicate their way to better wellbeing.



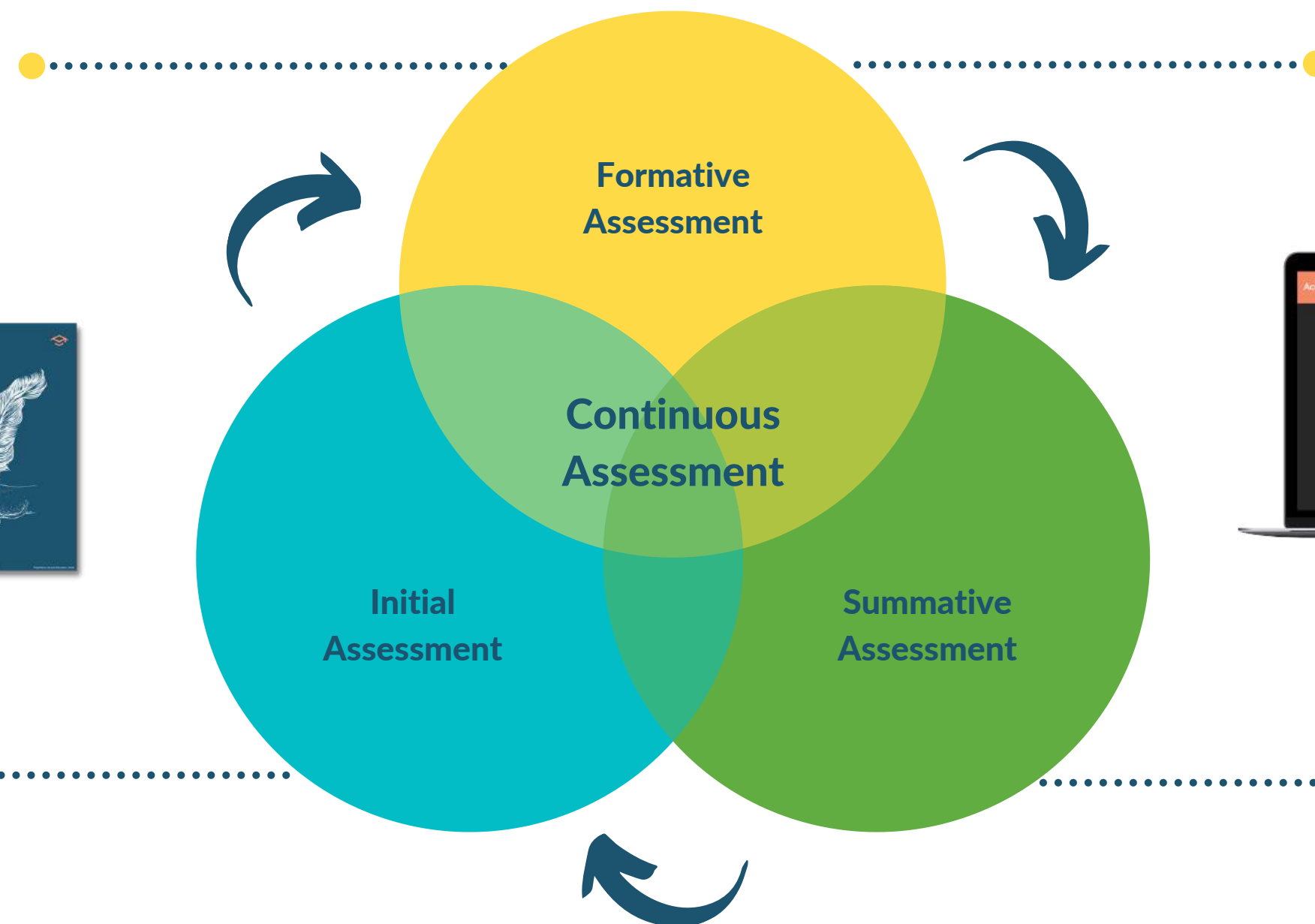
# Continuous Assessment

Our Continuous Assessment technology enables teachers to assess, reflect and intervene at every point of learning and is integral to developing a skills/competency-based teaching and learning approach.

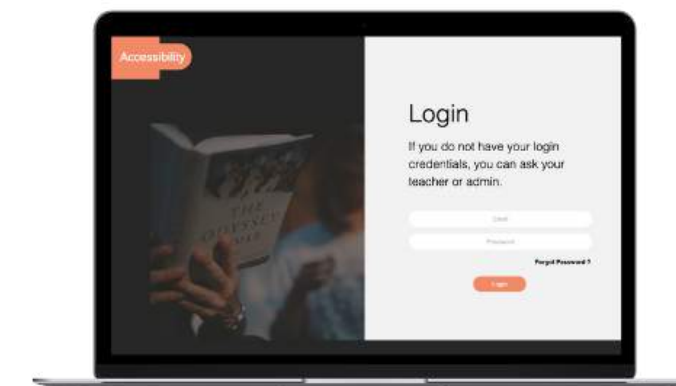
Complete Schemes of Work with lesson plans, learning objectives, differentiated activities, teacher instructions, engaging lesson content and diverse tasks.



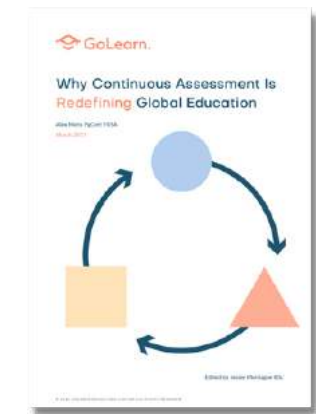
GoLearn's initial assessment is designed to measure skills to establish a baseline level of each students learning.



Formative assessments are seamlessly embedded in your lessons to reduce stress and exam anxiety providing a truly accurate view of your students' learning.



Summative assessments are conducted at key points in the educational journey, and students are given a grade (that aims to) reflect the achievements they have made.



Read our full white paper [here](#)

# Mapped to the National Curriculum

All of GoLearn's Schemes of Work, lessons and assessments are fully mapped and aligned to the national curriculum and exam-board outcomes.

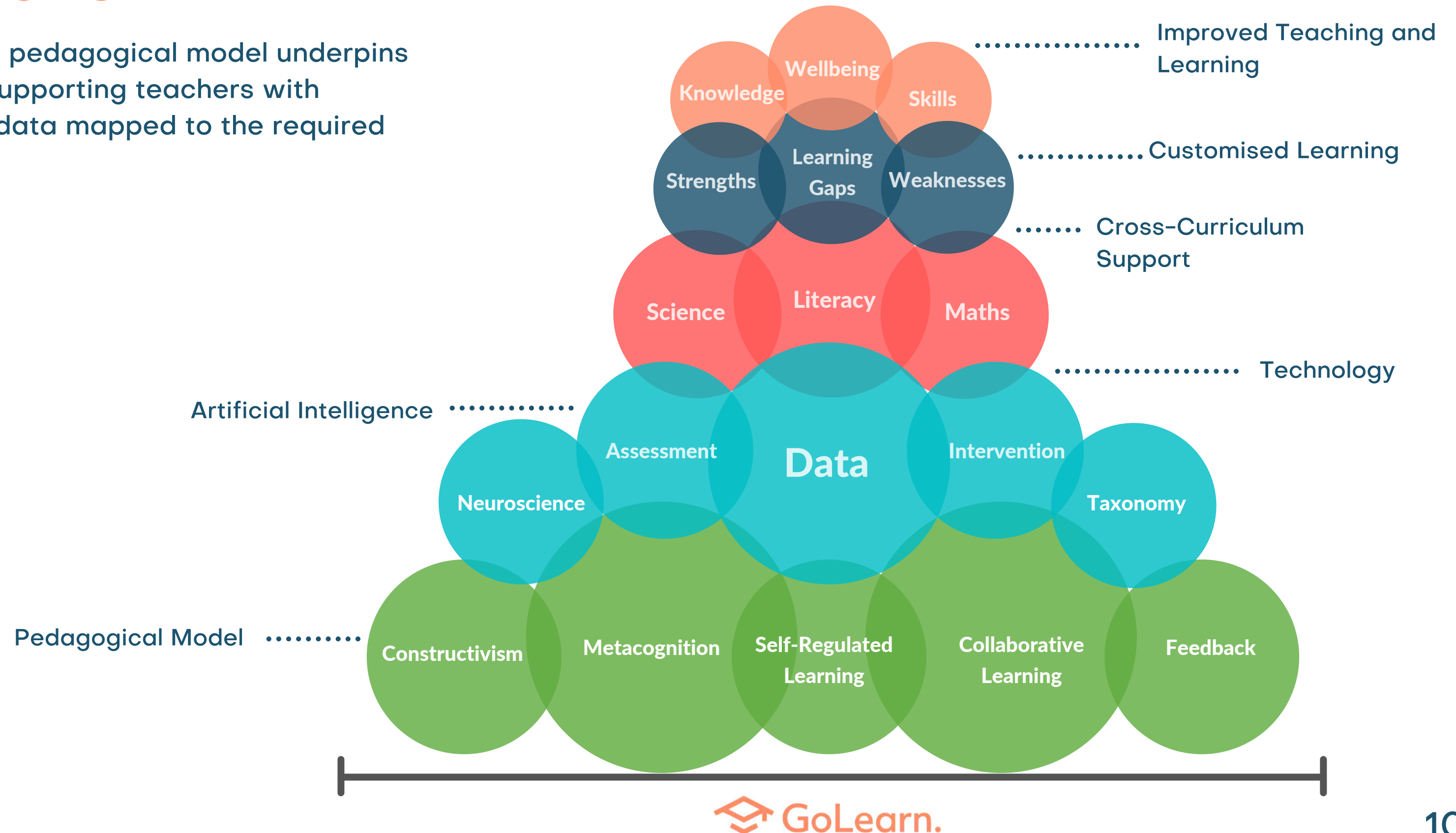


Our teaching team, literacy, language and exam experts are constantly working towards adding new curriculums to our solution, ensuring we can create a 'level playing field' for all students who use our platform.



# Our Pedagogy

GoLearn's evidenced pedagogical model underpins the entire platform, supporting teachers with accurate and timely data mapped to the required outcomes.



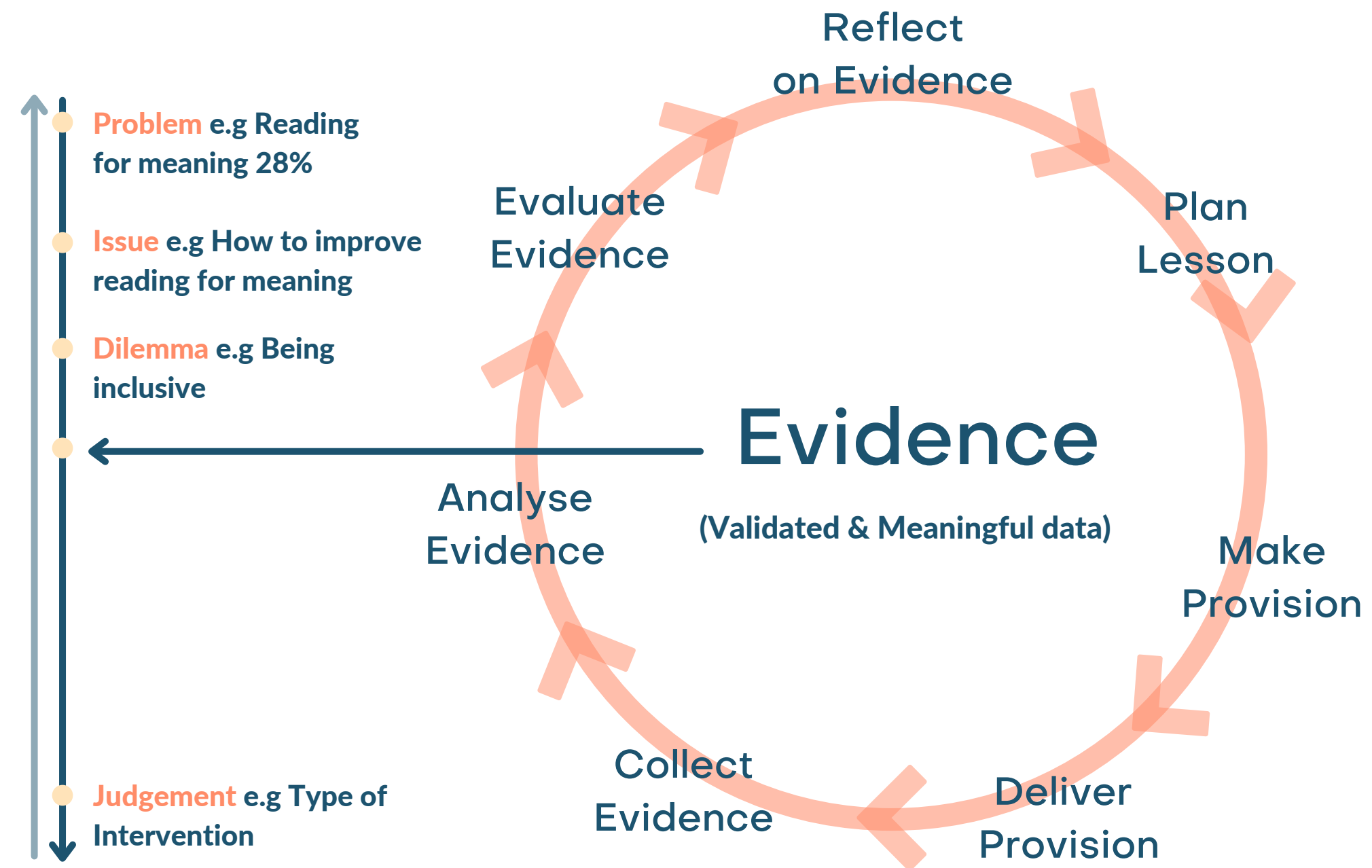
# Reflective Teaching and Learning

GoLearn promotes reflective and learner-centred pedagogy and enhances teachers' abilities to support the development of students' English literacy/language skills-based proficiency in all subject areas and critical thinking, creativity, and collaboration.

GoLearn gives teachers the edge to understand clearly, and without effort, their alignment to actual classroom practise before, during and after a course is taught.

GoLearn encourages learners to develop Reflective and higher-order thinking skills by prompting them to:

- Relate new knowledge to prior understanding
- Think in both abstract and conceptual terms
- Apply specific strategies in novel tasks
- Understand their own thinking and learning strategies



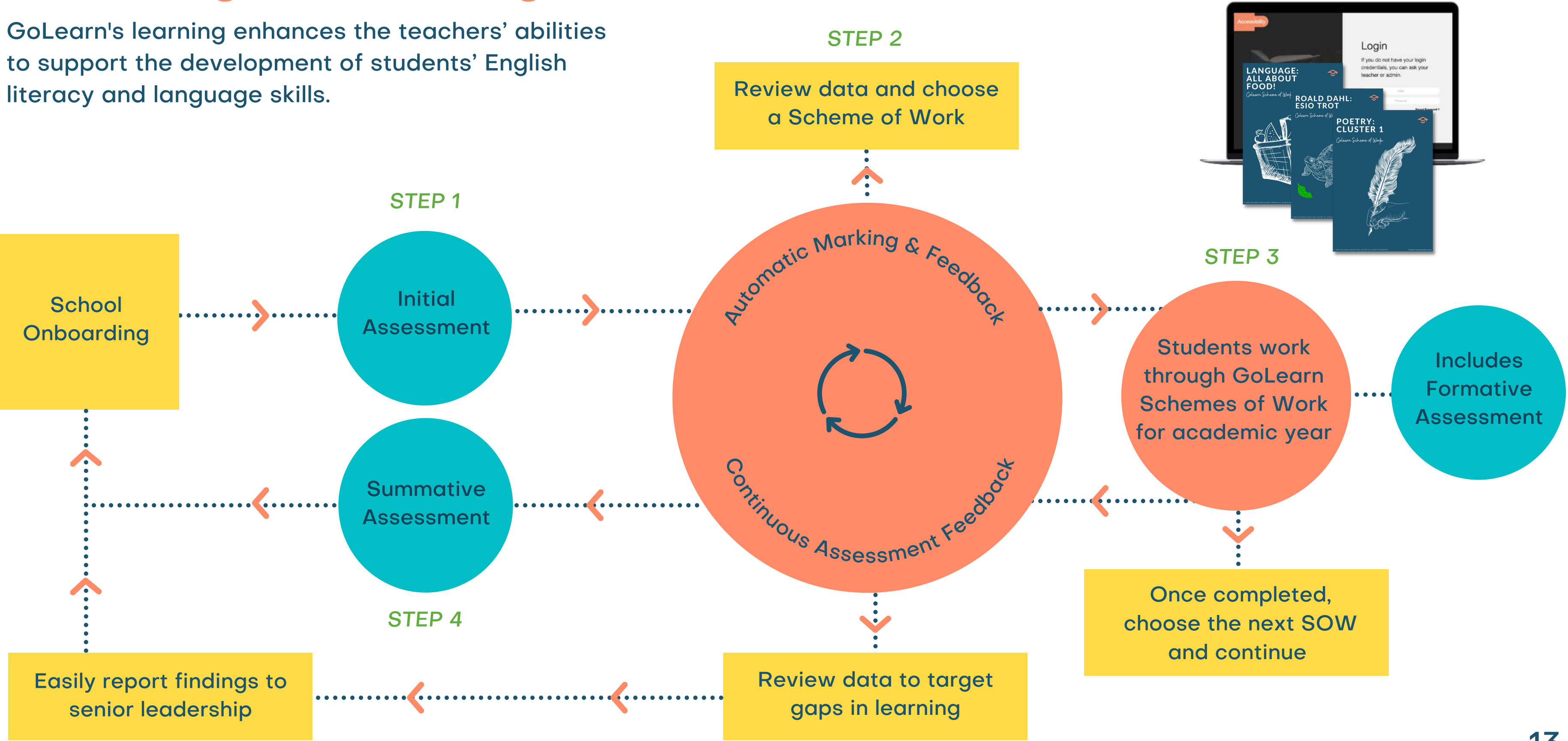


Using **GoLearn** in your classroom...



# Teaching & Learning With GoLearn

GoLearn's learning enhances the teachers' abilities to support the development of students' English literacy and language skills.



# SMART Schemes of Work

Specific, Measurable, Achievable, Related, Time-Bound

A SMART SOW is a fully developed course of study designed by our curriculum team in the UK and mapped to your national curriculum.

It includes: 18 lessons (each with 3-4 tasks) that can be taught in class or as homework.

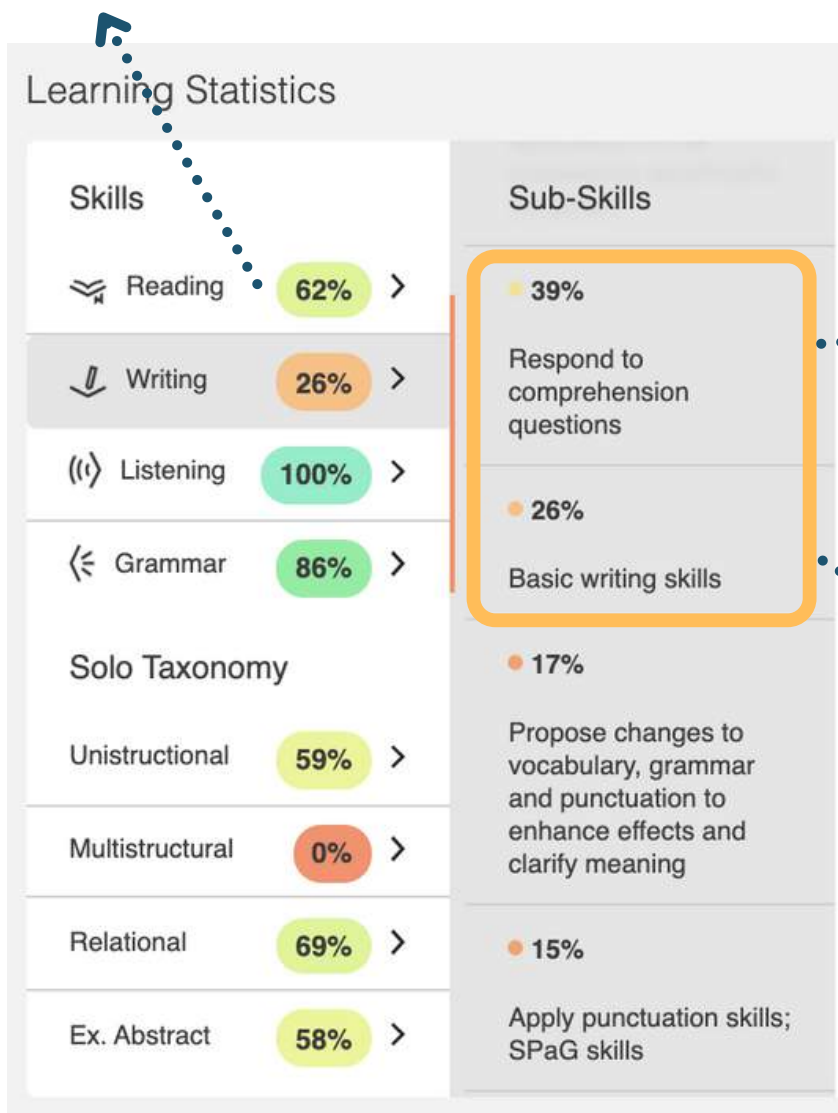
- Lesson Plans
- Learning Objectives
- Differentiated Activities
- Teacher Instructions
- Engaging Lesson Content
- Diverse Tasks
- Reduce Workload
- Ensure Continuity
- Encourage Inclusivity
- Expand Reading
- Improve Outcomes
- Enhance Teaching



# Reviewing Your Class Data

By taking a deeper look into your class data from embedded assessments in every lesson, you can get a granular understanding of the exact learning gaps your students have.

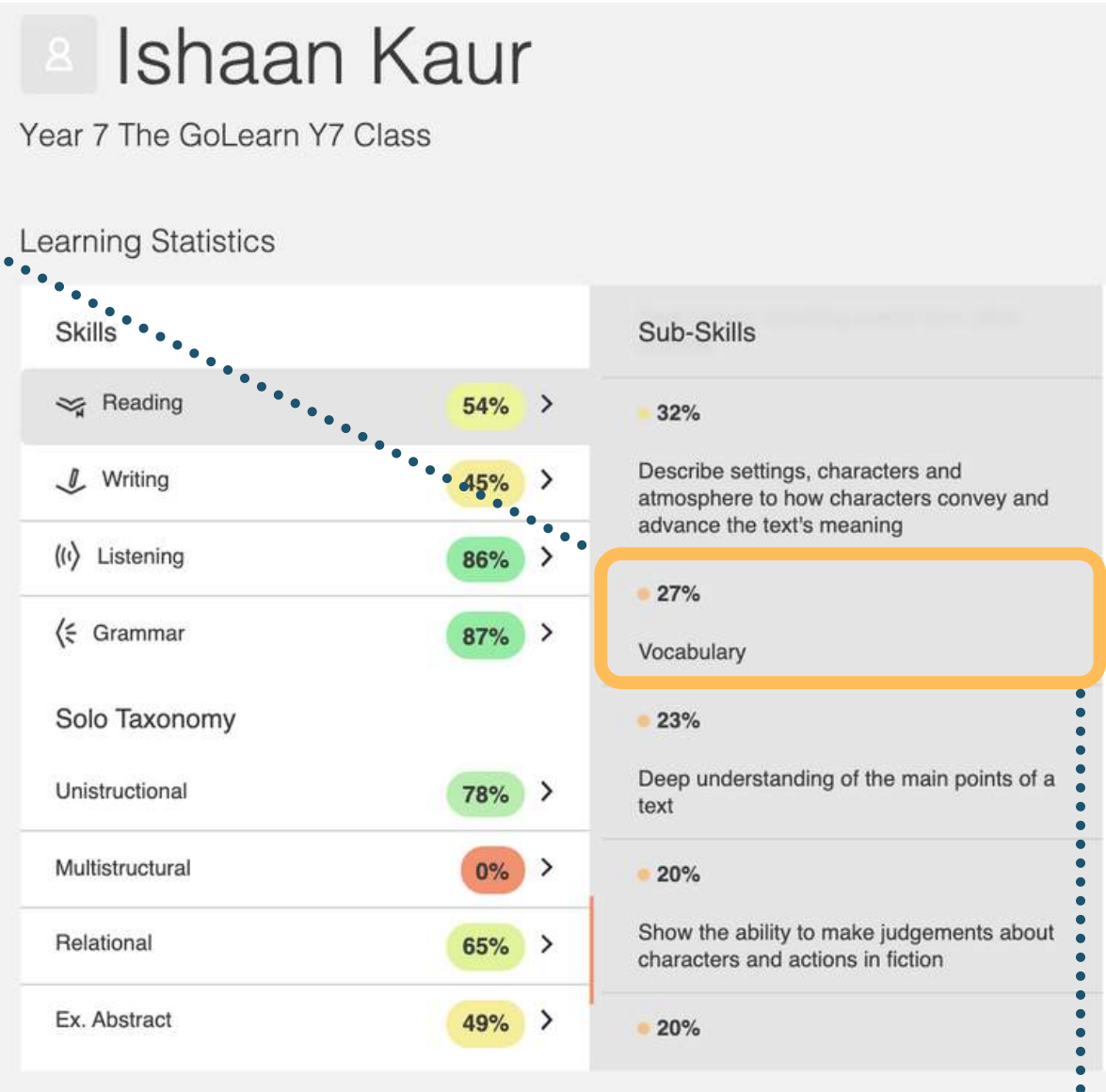
On a **whole class level**, I can see that I need to spend some time working on finding evidence from texts. As a result, I would make sure the SOW that I planned included a range of different simple texts from different cultures and backgrounds.



These are areas I may have missed by completing a typical assessment so GoLearn provides me with the depth of data to plan for success.

I would also build in opportunities within my lessons for students to practice, both written and verbally, explaining the main point of a text.

On an **individual level** I can see that Ishaan's lack of understanding of vocabulary is likely contributing to his poor comprehension skills.



As a result I would set up a **small group intervention** for 3-4 students who had a similar skill level focused on increasing vocabulary.

# Choosing the right scheme of work

Once you have a more detailed understanding of where your student's weaknesses are you can choose a curriculum mapped scheme of work to work through in class and/or at home.

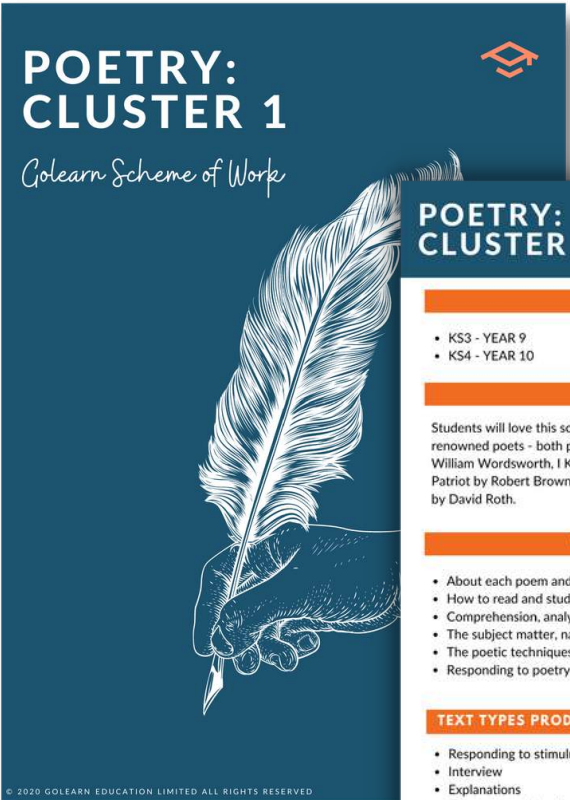
By the end of the unit, students will have demonstrated skills of reading, writing, listening, comprehension, analysis and inference.

01 KS3 - Year 8  
The Heart of the Tree By Bunner Taught lesson

02 KS3 - Year 8  
Language Techniques in The Heart of a Tree

03 KS3 - Year 8  
Analysing The Heart of the Tree

Lessons and tasks are differentiated for every learner, thus ensuring all lessons are fully inclusive and challenging for all abilities. Our audio/visual/kinaesthetic activities ensure all learning styles are catered for.



## POETRY: CLUSTER 1

### YEAR GROUPS

- KS3 - YEAR 9
- KS4 - YEAR 10

### DESCRIPTION

Students will love this scheme of work celebrating renowned poets - both past and present. Featuring William Wordsworth, I Know Why The Caged Bird Sings by Robert Browning, Abu Ben Adhem by David Roth.

### WHAT WILL BE

- About each poem and poet
- How to read and study poetry, including the subject matter, narrative voice and tone
- The poetic techniques used by the poets
- Responding to poetry based questions with

### TEXT TYPES PRODUCED

- Responding to stimulus
- Interview
- Explanations
- Comparing and contrasting
- Newspaper article

17/60 tasks are Peer Review

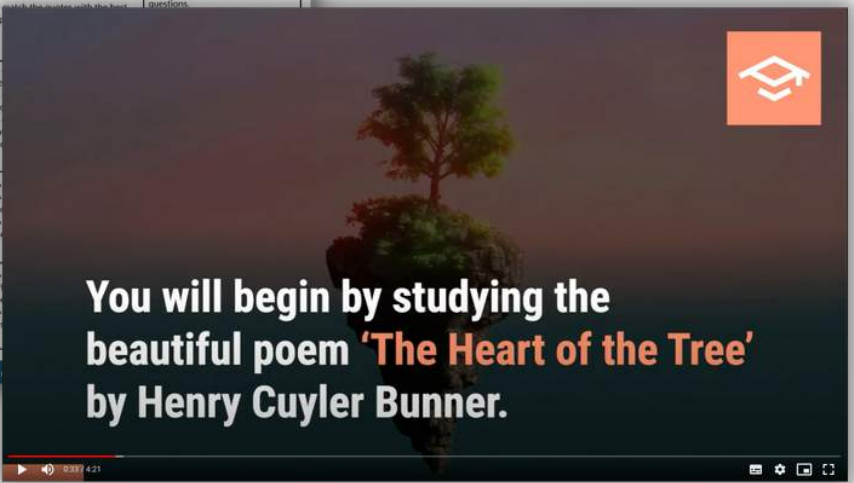
All GoLearn Schemes of Work are developed in the UK by experts in English literacy and language.

Complete Schemes of Work with lesson plans, learning objectives, differentiated activities, teacher instructions, engaging lesson content and diverse tasks.

Includes Teacher Taught lessons and collaborative learning.

## POETRY: CLUSTER 1

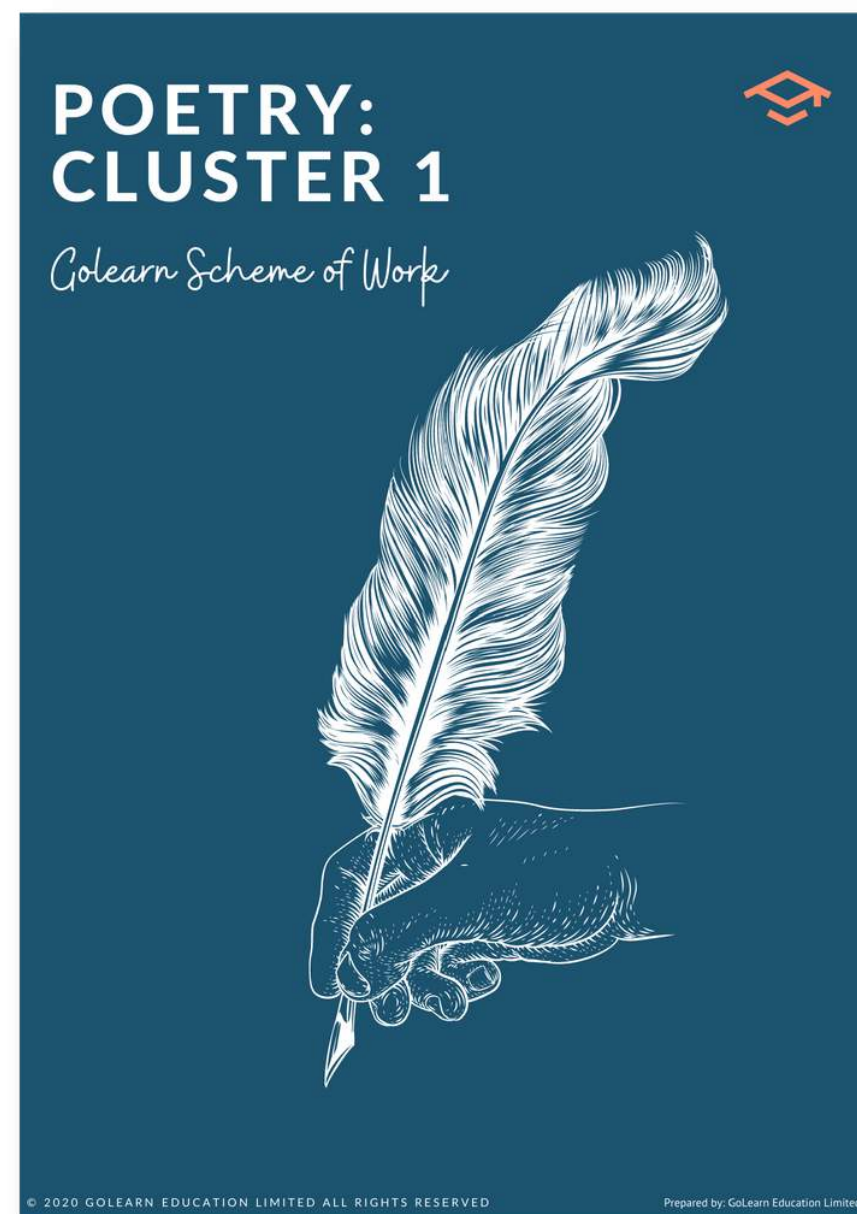
	Lesson 1 Learning Objectives	Lesson 2 Learning Objectives	Lesson 3 Learning Objectives
Unit 1	This is a teacher taught lesson about inference.	To learn about different poetic techniques. To understand what they mean. To be able to identify them.	To read, enjoy, reflect and analyse the poem Daffodils by William Wordsworth. To learn biographical information about William Wordsworth. To use correct grammar.
Unit 2	To analyse a poem. To investigate meanings. To provide their own interpretations.	To explore Daffodils in detail, by reading an analysis about the language techniques used in the poem. To analyse structural changes, rhyme scheme and the significance of the poem's ending.	To mark incorrect information in an extract. To complete a summary about Angelou. To re-write statements about Angelou using correct grammar.
Unit 3	To complete a summary about what is happening in each stanza of the poem. To explore the tone, speaker and title of the poem. To present their own opinions.	To explore language in a poem. To select the best interpretation of a quote. To match the quotes with the best ending.	To read and respond to true or false statements. To answer comprehension questions.
Unit 4	To read a summary of a poem and then choose the correct answers. To answer some simple text correction questions. To provide developed written responses to some comprehension questions.	To read the poem. To answer the questions. To mark the answers.	
Unit 5	To study a poem in great detail. To appreciate the meaning intended by the writer. To improve their appreciation of poetical form and language.	To read the poem. To answer the questions. To mark the answers.	
Unit 6	To compare poems by their themes or subject matter. To identify how some poems connect with each other. To write a newspaper article.	To read the poem. To answer the questions. To mark the answers.	



Aligned with UK Key Stages, Cambridge and more...

# Choosing the Right Scheme of Work

You can browse our catalogues or request support from the GoLearn team when choosing your SOW. See our example for 'Poetry Cluster' below which is popular among teachers looking to improve 'Reading Comprehension'.



POETRY: CLUSTER 1	
YEAR GROUPS	
<ul style="list-style-type: none"><li>• KS3 - YEAR 9</li><li>• KS4 - YEAR 10</li></ul>	
DESCRIPTION	
Students will love this scheme of work celebrating seminal poems from world-renowned poets - both past and present. Featured poems include: Daffodils by William Wordsworth, I Know Why The Caged Bird Sings by Maya Angelou, The Patriot by Robert Browning, Abu Ben Adhem by Lee Hunt and Nine Gold Medals by David Roth.	
WHAT WILL BE COVERED	
<ul style="list-style-type: none"><li>• About each poem and poet</li><li>• How to read and study poetry, including technical terminology</li><li>• Comprehension, analysis and inference skills</li><li>• The subject matter, narrative voice and tone</li><li>• The poetic techniques used by the poets</li><li>• Responding to poetry based questions with accuracy</li></ul>	
TEXT TYPES PRODUCED	TOP 5 SKILLS & SUB-SKILLS
<ul style="list-style-type: none"><li>• Responding to stimulus</li><li>• Interview</li><li>• Explanations</li><li>• Comparing and contrasting</li><li>• Newspaper article</li></ul>	<ul style="list-style-type: none"><li>• Reading - Be able to identify key details that support the main ideas in a text</li><li>• Reading - Comprehension - Find evidence from simple texts</li><li>• Reading - Comprehension - Explain the meaning of words in context</li><li>• Writing - Basic writing skills</li><li>• Listening - Listen to audio and respond accordingly showing comprehension</li></ul>
17/60 tasks are Peer Review	
© 2020 GOLEARN EDUCATION LIMITED ALL RIGHTS RESERVED	

## TOP 5 SKILLS & SUB-SKILLS

- Reading - Be able to identify key details that support the main ideas in a text
- Reading - Comprehension - Find evidence from simple texts
- Reading - Comprehension - Explain the meaning of words in context
- Writing - Basic writing skills
- Listening - Listen to audio and respond accordingly showing comprehension

# Real-time Granular Data

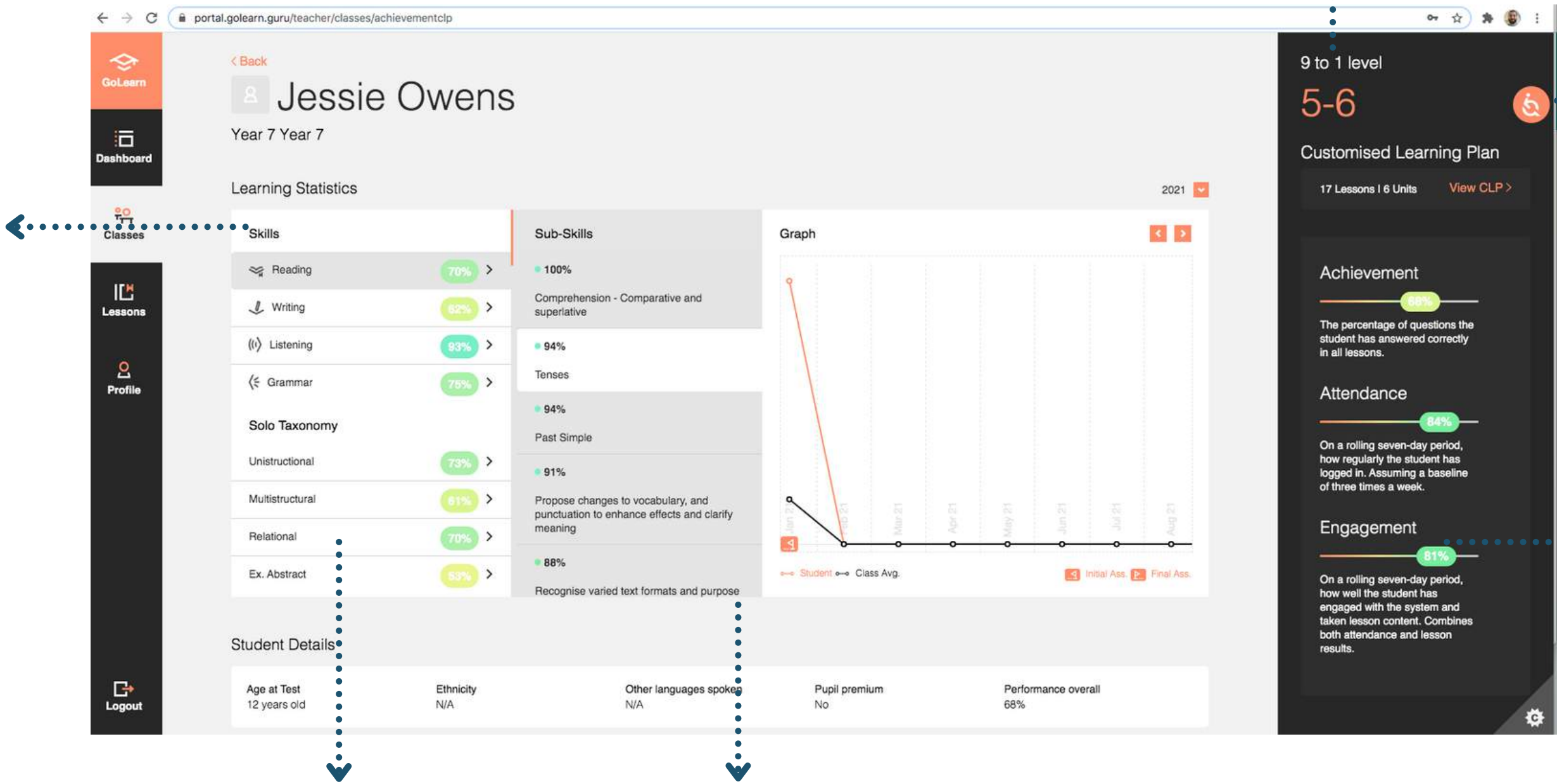
All assessment data is gathered and clearly displayed via your easy-to-use dashboard.

Teachers can now see in detail how interventions in the class improve potential exam performance.

Real-time learning statistics for Listening, Reading, Writing and Grammar combined with SOLO Taxonomy.

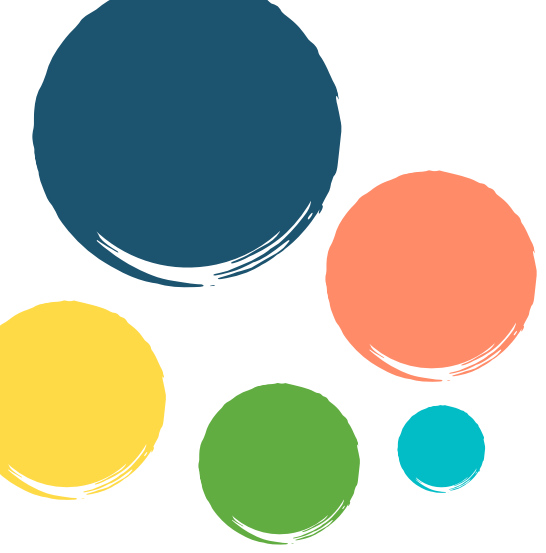
Built-in Accessibility tool to personalise the platform for your individual needs.

Achievement, Attendance and Engagement reporting for easy tracking and monitoring.



Easy to read and share

Granular breakdown of sub-skills to inform targeted remedial interventions.



What teachers say about using GoLearn...



# Testimonials



## Ellen Wilkinson School

"Through GoLearn's diagnostic data it provides the following: reduced teacher workload, effective use of teaching assistants and ownership of student learning which had a dramatic positive impact on their behaviour."

- Mr Paul Doyle, Deputy Head Teacher



## AAA English

"The nitty-gritty has been taken care of at such a high, professional level so I just need to monitor my students."

- Michael Lang, School Director



## Stanhope Primary

"The clear gap in data identified by GoLearn highlighted whole Year 5 concerns with inference and evaluation."

- Ms Mariam Yassin, Lead Teacher

# Comments & Highlights

The below quotes are taken from a recent impact and review survey conducted with all our schools studying the English curriculum. You can read it in full [here](#).

"GoLearn's resources are now a central part of our whole school approach to catch up literacy provision."

"Pupil voice (especially Pupil Premium Y5 cohort) reflects increased enjoyment of Guided Reading sessions."

"My students love it when I say its time for a GoLearn lesson!"

"AI is super helpful for quickly providing feedback to students."

"Reduced planning time for staff across KS2 due to developed and resourced sessions."

"GoLearn identified huge gaps in terms of ability to infer and evaluate at word level."

"Centralised data has hugely supported the planning for transition between key stages."

# Common FAQ's

## Does GoLearn replace Teachers?

GoLearn is an all-in-one teaching resource designed and developed for teachers to use in their classrooms, for homework and remote learning activities.

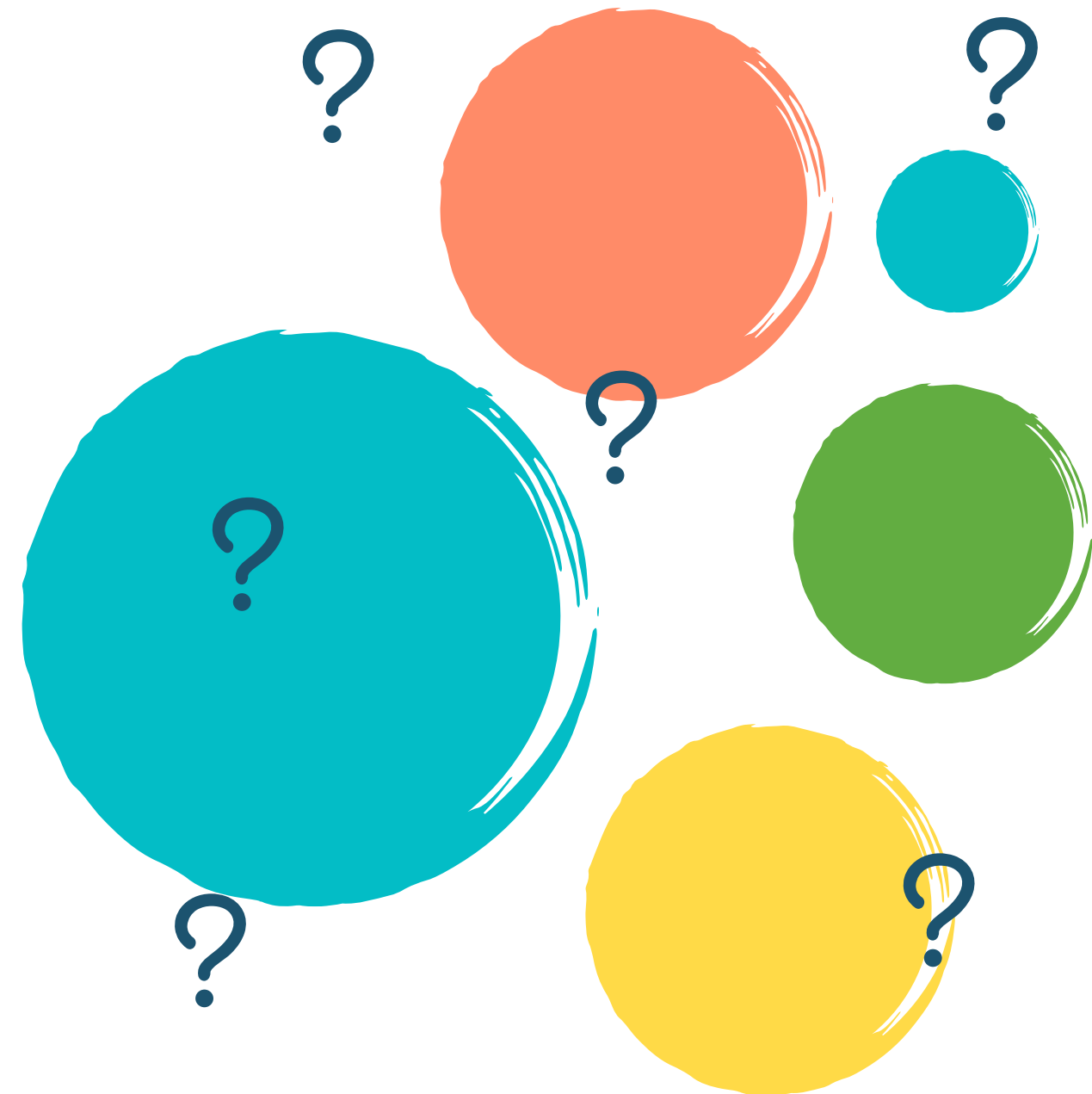
## Does GoLearn mean more work?

No, our platform's automatic marking and feedback capabilities actually reduce a teachers admin workload so they can spend more of their valuable time doing what they do best, teaching.

## What support and CPD does GoLearn provide?

GoLearn is committed to supporting schools in evaluating, reporting and leveraging data findings to develop targeted interventions and further accelerate pupil progress.

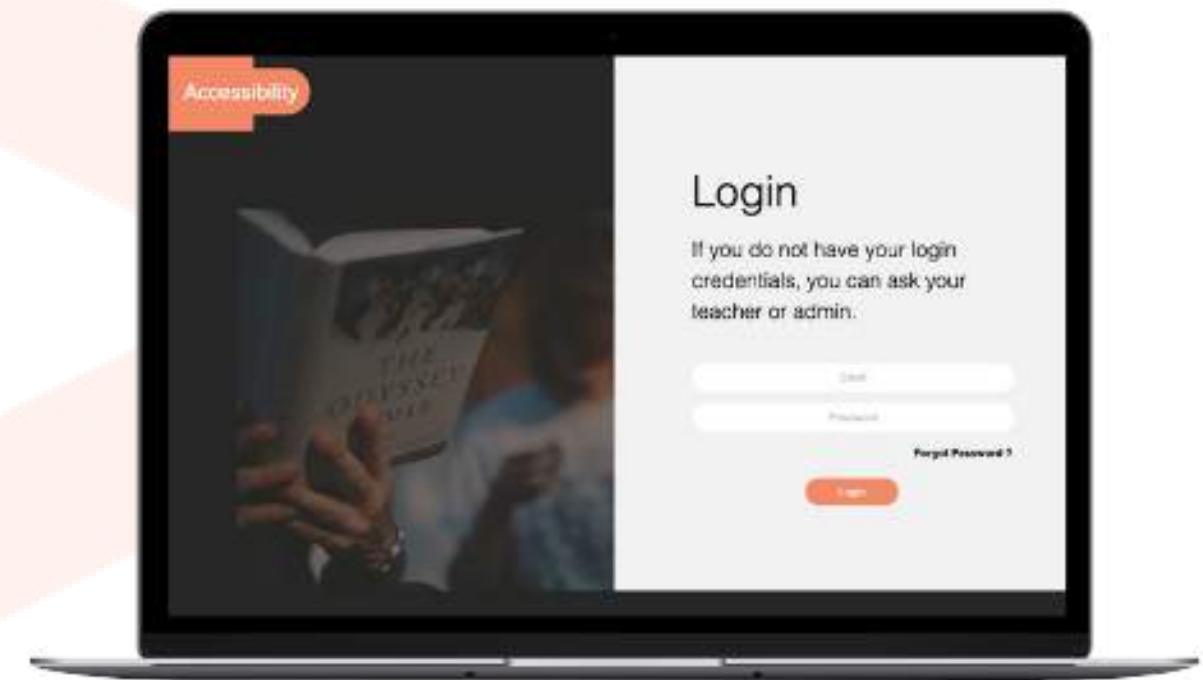
That's why we provide each user of our platform with comprehensive support – including advice and guidance, detailed staff and student help materials and in-depth CPD training - from the very beginning of your journey with us.



# Work smart, save time and improve results

Click the 'request a demo' button on the right to schedule a demonstration and a detailed presentation with our GoLearn experts.

[www.golearn.guru](http://www.golearn.guru)



[Request a Demo](#)

# Copyright notice

The entire content of this brochure is Copyright © 2021 by GoLearn Education Limited. All Rights Reserved. No aspect of this brochure may be copied or duplicated in whole or in part by any means without express prior agreement in writing.

Some photographs or references contained in the brochure may be the copyrighted property of others; acknowledgement of those copyrights is hereby given. All such material is used with the permission of the owner.

